

# SCOTTSDALE AIRPARK SUBMARKET SECOND FLOOR OFFICE SPACE FOR LEASE

15001 N HAYDEN ROAD • SCOTTSDALE, AZ 85260

**SUITE 201/202  
±2,764 SF**

EXCLUSIVELY OFFERED BY



**Randy Shell**  
Designated Broker  
C 480.694.4100  
randy@shellcommercial.com



**Amanda Wright**  
Senior Associate  
C 480.236.0037  
amanda@shellcommercial.com



O 480 443 3992  
www.shellcommercial.com  
16410 N 91st Street | Suite 112  
Scottsdale, AZ 85260

The above is subject to prior sales and leasing. This information has been secured from sources we believe to be reliable, but we make no representation or warranties, expressed or implied as to the accuracy of this information.



15001 N HAYDEN ROAD • SCOTTSDALE, AZ 85260

## EXPANSIVE WINDOWS | SWEEPING VIEWS | FLEXIBLE OPEN FLOOR PLAN

**Availability:** Suite 201 / 202: ±2,764 sf

- Features:**
- Independent second-floor office suite
  - Modern open floor plans with amazing views and ready for tenant finishes!
  - Private 1st floor entrance
  - Two private finished restrooms
  - HVAC in place
  - Prime location on major intersection (Hayden/Raintree) with GREAT Hayden Road signage visibility
  - One (1) mile from Loop 101 Freeway access

**Parking Ratio:** • 2.45/1000 sf

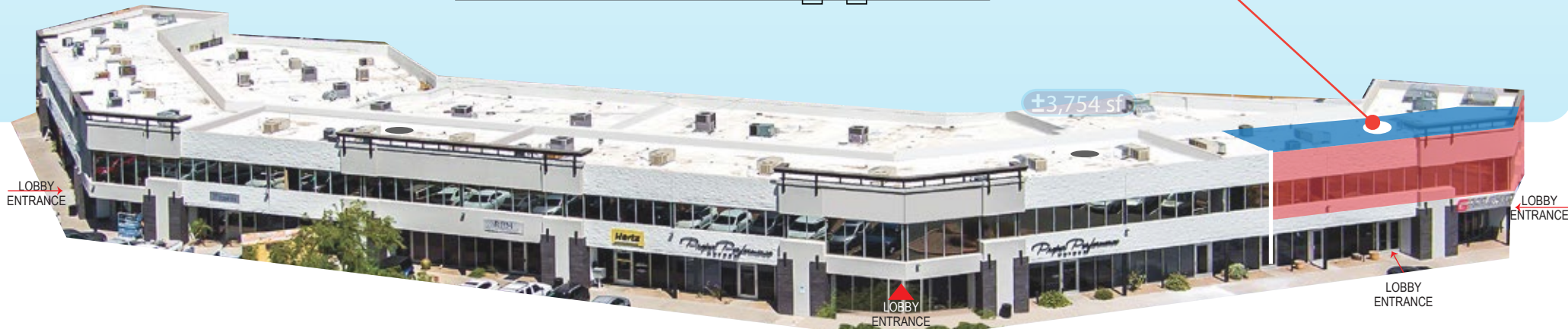
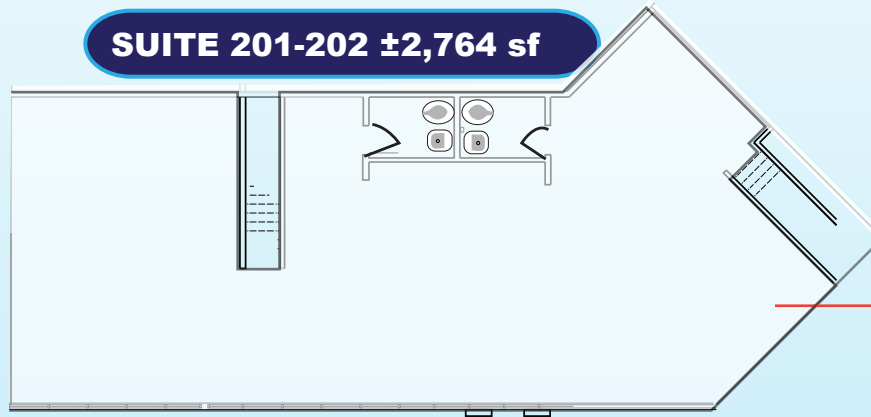
**Zoning:** • C-3 (Commercial), City of Scottsdale



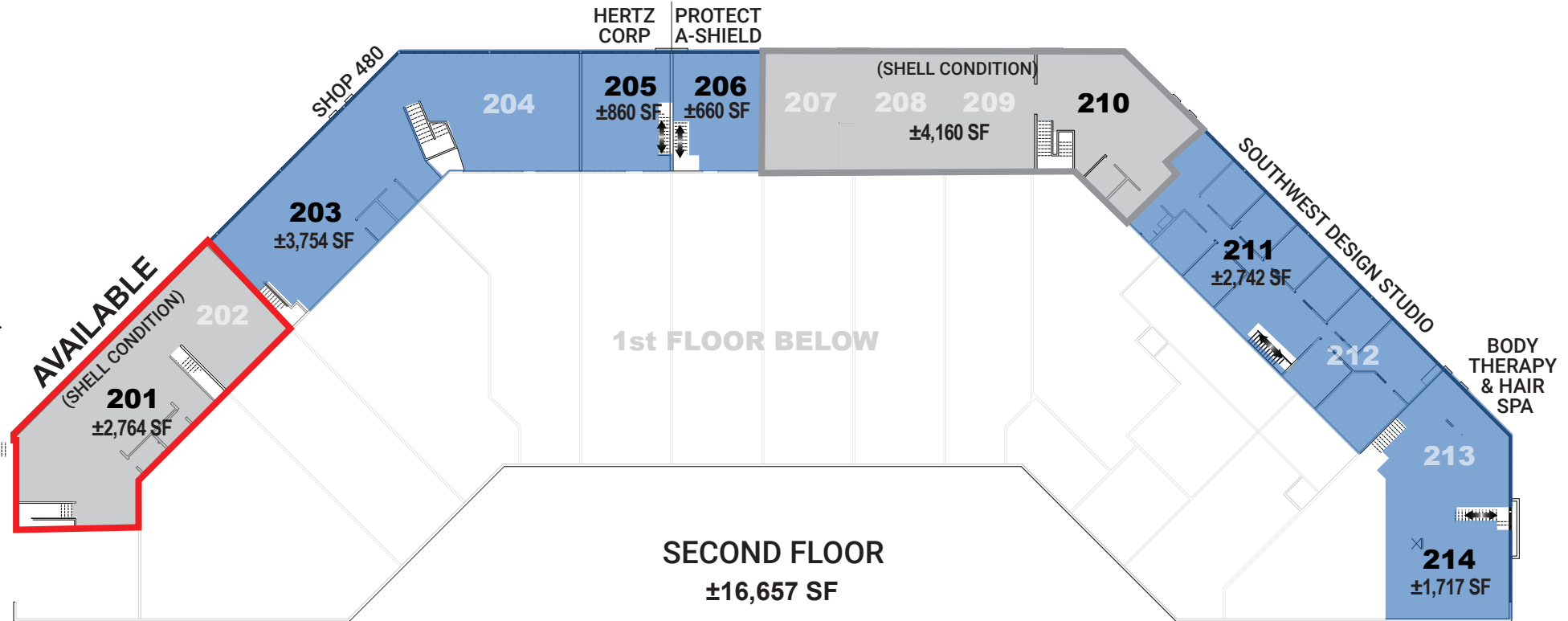
15001 N HAYDEN ROAD • SCOTTSDALE, AZ 85260



**SUITE 201-202 ±2,764 sf**



The above is subject to prior sales and leasing. This information has been secured from sources we believe to be reliable, but we make no representation or warranties, expressed or implied as to the accuracy of this information.



**NOT TO SCALE**

All information furnished regarding property for sale, rental or financing is from sources deemed reliable, but no warranty or representation is made to the accuracy thereof and same is submitted to errors, omissions, change of price, rental or other conditions, prior to sale, lease or financing or withdrawal without notice. No liability of any kind is to be imposed on the broker herein. This information has been secured from sources deemed reliable, however, we make no warranties as to its accuracy.



15001 N HAYDEN ROAD • SCOTTSDALE, AZ 85260

**SUBJECT PROPERTY**

TPC Scottsdale

THE PROMENADE SCOTTSDALE

SCOTTSDALE QUARTER

KIERLAND COMMONS

SCOTTSDALE TOWNE SQUARE

FRANK LLOYD WRIGHT BLVD

SCOTTSDALE RD

SCOTTSDALE AIRPORT

WESTWORLD OF SCOTTSDALE

TARGET

COSTCO WHOLESALE

THE HOME DEPOT